

National action plan 'One World, One Health' against AntiMicrobial Resistance (AMR) in Belgium

Belgian Association of Hospital Managers BVZD-ABDH

Pedro Facon

Director General DG GS



**World
Patient Safety
Day** 17 September 2020



2020 - Health Worker Safety: a Priority for Patient Safety



- ▶ “Primum non nocere”
- ▶ “To err is human”, Institute of Medicine, 1999
- ▶ Patient Safety: “absence of preventable harm to a patient during the process of health care, including the reduction of risk of unnecessary harm associated with health care to an acceptable minimum”
- ▶ “Because every point in the process of care-giving contains a certain degree of inherent unsafety”
- ▶ Patient Safety recognized as global health priority, made visible in 2019 through World Patient Safety Day
- ▶ COVID-19 pandemic reveals huge challenges and risks taken by health workers, so for 2020, WHO emphasizes their commitment & their needs:
 - ▶ Safe health workers, safe patients
- ▶ **patient safety is everyone’s business**



Patient safety & healthcare quality indicators

- ▶ **Estimations in high-income countries:** patient safety issues in 1/10 patients receiving hospital care
- ▶ **Safety:** The prevalence of patients with at least one **healthcare-associated infection** on any given day in Belgium in 2017 was estimated at 7.3%. This is stable across the time and above the EU average (6.4%) (ECDC PPS 2017 - KCE Performance report 2019)
- ▶ **Continuity:** 56.6% of the hospitalizations of elderly (65 years old or above) are **followed effectively post-discharge** by a GP's encounter in Belgium (KCE Performance report 2019)
- ▶ **Appropriateness:** International studies suggest 50% of **antibiotic use** in the ambulatory sector is inappropriate (Laka et al 2020)
- ▶ **Effectiveness:** **Case-fatality after ischaemic stroke** in Belgium are above EU-15 average (8,4% vs. 7,1%) (KCE Performance report 2019)
- ▶ **Prevention:** 58% **influenza vaccination** in Belgian people aged 65 and over, whereas the EU average was 44% (OECD Health Statistics 2019)
- ▶ ...

Actions taken with regard to patient safety & health care quality

- ▶ Support plans & contracts Quality & Patient Safety
 - ▶ Patient safety incident reporting and learning systems
 - ▶ Safe surgery checklist
- ▶ Clinical pharmacy
- ▶ Initiatives for neonates & infants
- ▶ BelMIP: patient safety & radioprotection in radiology
- ▶ BeQuinT: transfusion practices, policies & use of blood components
- ▶ BAPCOC
 - ▶ Infection Prevention Control (IPC)
 - ▶ Antimicrobial Stewardship (AMS)
- ▶ Colleges of physicians
- ▶ eHealth Plan



Support Plans for general & psychiatric hospitals

- ▶ The support Plans are a collaboration between the FPS Health and 8 centres of expertise: 5 universities and 3 Schools of Public Health
- ▶ Each of these centres has developed specific trainings linked to the themes of the P4P programme (for general hospitals) and the multi-year quality and patient safety programme (for psychiatric hospitals)
- ▶ The proposed activities are intended for a broad public from general and psychiatric hospitals: quality of care & patient safety staff members, members of the Committee 'Patient safety', managers (clinical and non-clinical), doctors, nurses, middle management, hospital pharmacists and also other staff involved in the theme of quality of care and patient safety and Pay for Performance
- ▶ Recurrent organization of workshops on basic patient safety skills e.g. retrospective incident analysis; proactive risk assessments, WHO taxonomy for incidents
- ▶ Register via: www.patient-safety.be



Breastfeeding supported by FPS Health



- ▶ WHO recommends exclusive breastfeeding for the first 6 months of life to promote optimal infant health & development
 - ▶ contains bioactive molecules
 - ▶ contributes to the maturation of the immune system
 - ▶ has a favorable impact on the gut microbiome = optimal nutrition for a safe start in life
 - ▶ is initiated most of the time in hospitals
- ▶ Need to support breastfeeding education and training for healthcare staff
- ▶ **27 Baby-Friendly Hospitals in Belgium**
- ▶ The FPS Health, DDGS, supports the development of the Baby-Friendly Initiative in Belgian hospitals through the assignment of a quality label

Developmental Care for preterm born babies

Enhancement of the infant's neurodevelopment

► The FPS Health strongly recommends



Appropriate neonatal units for preterm born & fragile babies



Guidance of parents in the understanding of their baby's behaviour and ensuring secure attachment (NIDCAP, breastfeeding, skin-to-skin care)



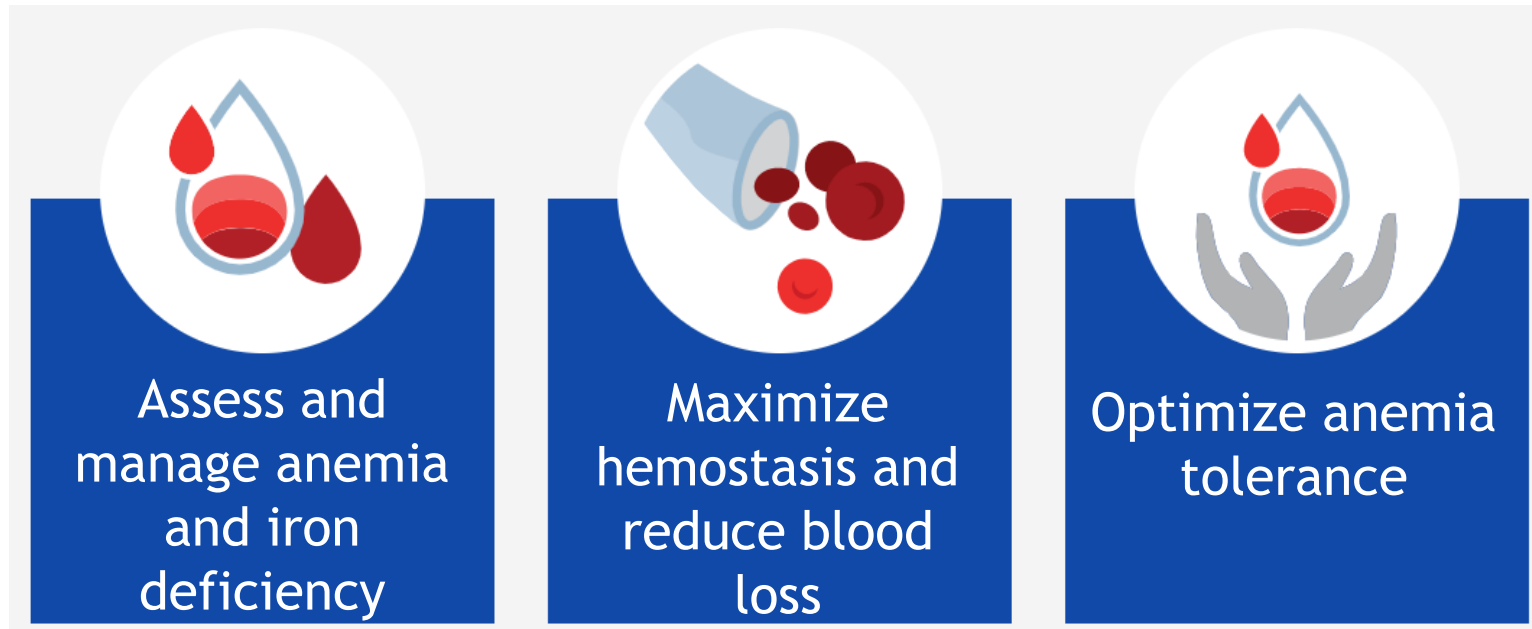
Deployment of trained NICU staff in developmental care programs



What is transfusion safety?

> blood safety, > hemovigilance

Patient blood management (PBM):
evidence-based approach to optimising care of
patients who might need transfusion



▶ Belgian Antibiotic Policy Coordination Commission founded in 1999

▶ Goals: combat the increasing antimicrobial resistance

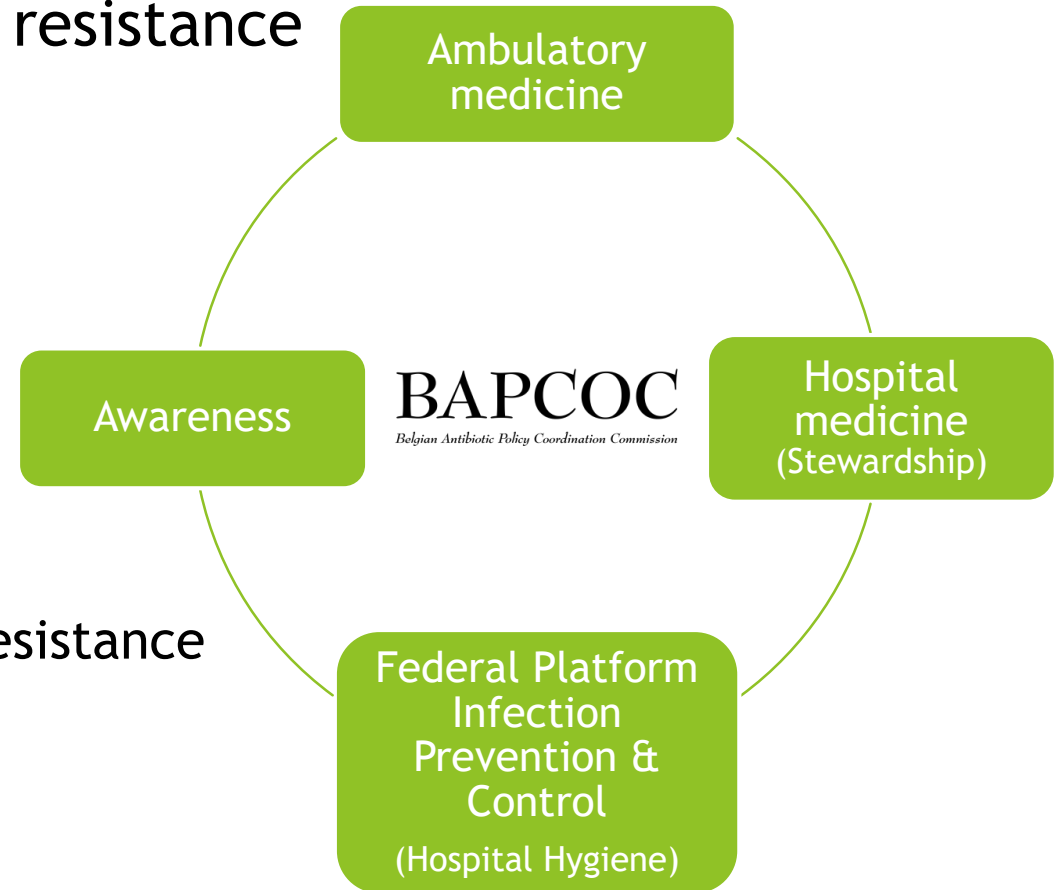
- ▶ promote appropriate antibiotic use
- ▶ improve infection prevention & control
- ▶ monitor based on indicators and targets

▶ 2020 One World, One Health perspective:

▶ One National Action Plan against AntiMicrobial Resistance

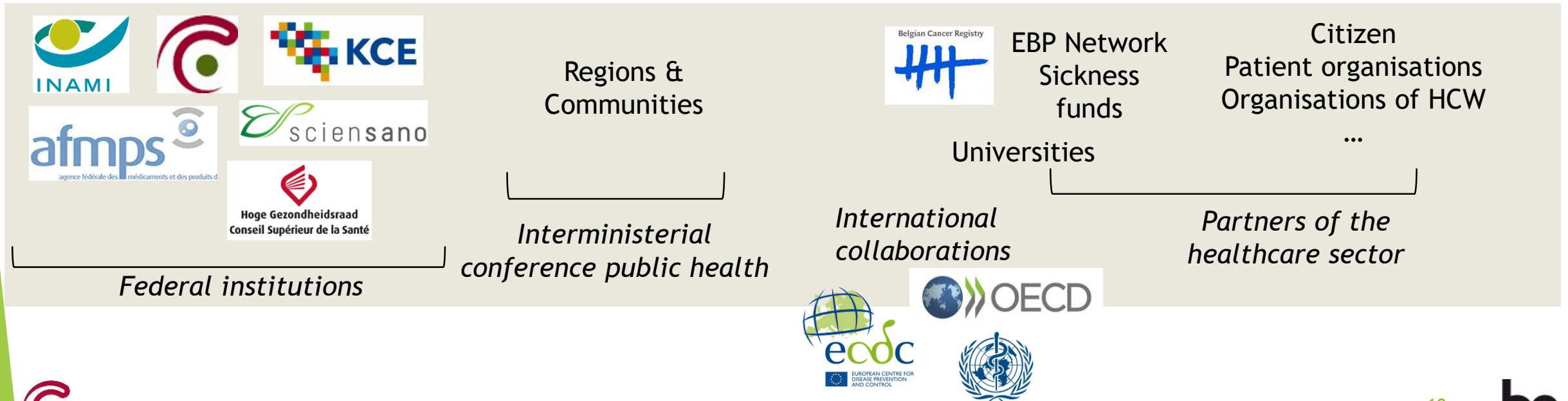
▶ 3 pillars:   

▶ DGGS is coordinating the human pillar



Objectives of the DGGS with regard to patient safety

- ▶ achieve effective, safe and people-centred care
 - ▶ integrated federal policy on quality of care with all federal institutions in which we involve our partners from the sector and the federated agencies
 - ▶ embedding a culture of patient safety and quality improvement in healthcare
 - ▶ making the quality of care transparent



New initiatives with regard to patient safety & health care quality

- ▶ Quality Act
- ▶ Reform of hospital financing
 - ▶ 3rd multi-year plan for psychiatric hospitals
 - ▶ Pay-for-Performance (P4P) since July 2018
- ▶ Patient medical files: BMUC criteria
- ▶ Personal health viewer
- ▶ Audits Passerelle
- ▶ Hospital networks: cross-sector and integrated care
- ▶ Patient-centredness: PROMS and PREMS
- ▶ BelMIP: Clinical audit
- ▶ Integrate evidence-based practice in clinical workflow:
 - ▶ Clinical Decision Support tool in radiology
 - ▶ Antimicrobial prescription

Mijngezondheid



Third multi-year plan quality of care & patient safety for psychiatric hospitals

- ▶ 5-year contract (2018-2022)
- ▶ Topics:
 - ▶ Medication care
 - ▶ Somatic care
 - ▶ Measures limiting the freedom
 - ▶ Auto-agression (suicide /self-harming behaviour)
 - ▶ Agression
 - ▶ Escape behaviours
 - ▶ Falls
- ▶ More info: www.patient-safety.be



Pay for Performance

Principle

“Pay for Performance focusses on the quality component of performance. It is the mechanism that directly links the compensation for the delivered care to the results achieved using structure, process and/or outcome indicators.”

P4P indicators: patient safety is an important topic

- ▶ Structure indicators
 - ▶ ISQua hospital accreditation
 - ▶ Patient safety incident notification and learning systems and ICPS (WHO-taxonomy)
 - ▶ Participation to surveillance and labels such as hand hygiene, Baby-Friendly Hospital Initiative
- ▶ Patient experiences: hospital-wide measures
- ▶ Outcome indicators
 - ▶ Mortality indicators: oncology, hip fracture, ischemic stroke

Clinical Trials College (CT College)

- ▶ Regulation (EU) No 536/2014 (end 2021) + Law 7th May 2017 (+ CTR pilot project)
- ▶ The CT College ensures that the ethical assessment of CTs is carried out in Belgium:
 - ▶ within the harmonized European approval process;
 - ▶ with the required quality; and
 - ▶ independently of the sponsor, the clinical trial site, the investigators involved and any other undue influence

[Call for candidates](#) for membership of the CT College (until 3rd October) !

- ▶ Informed Consent Form (ICF) : new template in collaboration with BAREC, pharma.be and patient organizations
- ▶ CTR Pilot project (state of affairs):
 - ▶ 15 Ethics Committees
 - ▶ 30% of the Belgian clinical trials within the CTR pilot project
 - ▶ Involved in the Voluntary Harmonized Procedure of assessment of the European clinical trials
- ▶ The safety of the participants in the clinical trials is essential !



Challenges & key factors toward success

▶ Challenges

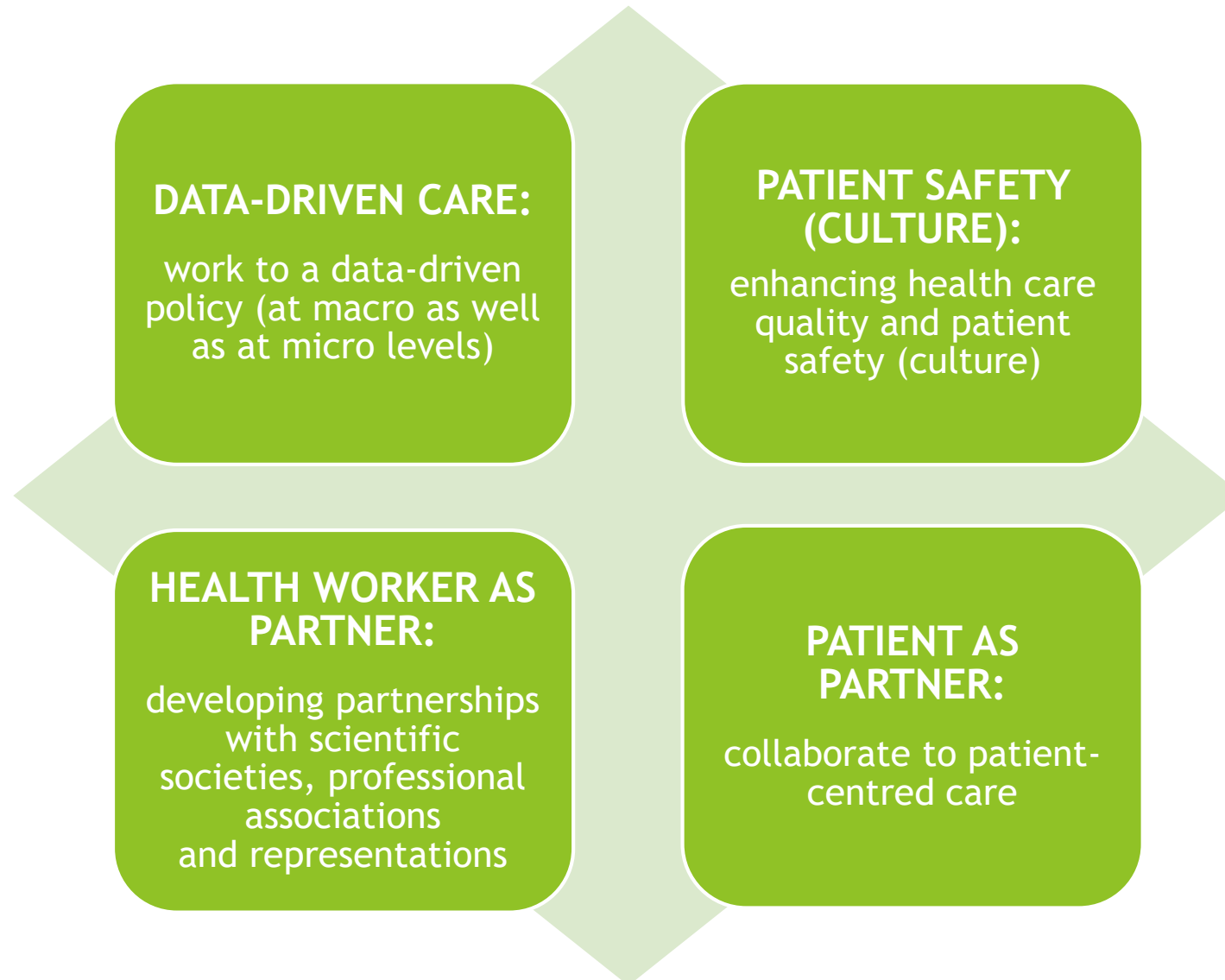
- ▶ Availability of **good quality, timely data** & capacity to analyse, utilize them (indicators)
- ▶ **Training & awareness** on patient safety included since the basic curriculum
- ▶ **Transparency & public reporting**
- ▶ **Complexity** of the Belgian health system
- ▶ **Integrated care**

▶ Key factors

- ▶ **Commitment of management & health workers**
- ▶ **Priorities** determined by health authorities
- ▶ **Collaborations** among hospitals and with primary care (elderly care)



4 Strategic axes on which collaboration on patient safety & health care quality should be built



Thank you for your attention. To contact us:

Ontdek de initiatieven en het laatste nieuws van het Directoraat-generaal
Gezondheidszorg in het online magazine BeCare

Découvrez les initiatives et nouveautés de la Direction générale Soins de Santé dans le
magazine digital BeCare

www.becaremagazine.be

E-Zine

BeCare



Nous saluons le travail fourni au quotidien par tous les professionnels de la santé

Wij prijzen het dagelijks werk van alle gezondheidsprofessionelen

www.info-coronavirus.be #togetheragainstcorona

