



# Which type of registration can I submit?

---

## Introduction

In the guidance document 'Which type of account do I need, you find more information about the types of account you can create and the consequences it has for the types of registration you can submit.

A foreign supplier can submit only one type of registration, namely the inverse registration describing only the characteristics of the substance in nanoparticulate state.

A registrant or a representative however, can submit different types of registration, depending on whether the registration concerns

- a substance or a mixture
- a first registration or an annual update
- a registration using a previous registration number
- a product which is used exclusively within the framework of scientific research and development or within the framework of product and process oriented research and development

Which type of registration you have to submit, and which annex of the Royal Decree is applicable, is given in the scheme below (page 5).

## Foreign supplier : Inverse registration, describing only the characteristics of the substance in nanoparticulate state

Within the account for a foreign supplier, you will only be able to make registrations of the 'inverse' type. This type of registrations only requires the information set out in section 2 of annex 1 or annex 2 of the Royal Decree. The foreign supplier registers on a voluntary basis. He will receive a registration number, which he transfers to his customers. These customers can then use the option of the 'limited' registration.

## Registrant – representative : decision tree

The decision tree comprises 8 questions. The answers you give to specific questions will indicate which type of registration you have to submit and/or will refer you to the next question you must answer.



## Question 1:

I want to submit a first registration or an annual update?

If the answer to this question = **first registration**, go to [question 3](#).

If the answer to this question = **annual update**, go to [question 2](#)

## Question 2:

I want to submit the annual update for a substance or a mixture?

If the answer to this question = **substance**, you will have to provide the information requested in annex 3 of the Royal Decree.

If the answer to this question = **mixture**, you will have to provide the information requested in annex 4 of the Royal Decree.

## Question 3:

I want to register a product which is used exclusively for scientific research and development or product and process oriented research and development (cf. Art 7 of the Royal Decree) ?

If the answer to this question = **yes**, you can use a [simplified registration](#). This means that only the information requested in annex 6 of the Royal Decree has to be given. The registrant has to provide an affidavit, signed by the responsible for the scientific research and development, or product and process oriented research and development, that the substances shall not be placed on the market. This document has to be provided for every person/legal entity who acquires the substance or mixture from the registrant. A template of this declaration can be found at [www.nanoregistration.be](http://www.nanoregistration.be).

If the answer to this question = **no**, go to [question 4](#)



### Question 4:

I want to submit the registration for a substance or a mixture?

If the answer to this question = **substance**, go to [question 5](#)

If the answer to this question = **mixture**, go to [question 6](#)

### Question 5:

My substance has already been subject to a previous registration (cf. Art 8 of the Royal Decree)?

If the answer to this question = **yes**, you can use the option of a limited registration. You have to provide the information requested in annex 1 of the Royal Decree, but you can use the previous registration number to replace the information requested in section 2 of annex 1.

If the answer to this question = **no**, you will have to provide the information requested in annex 1 of the Royal Decree.

### Question 6:

My mixture, or the substance(s) contained in it, have already been subject to a previous registration (cf. Art 8 of the Royal Decree)?

If the answer to this question = **yes**, go to [question 7](#)

If the answer to this question = **no**, you will have to provide the information requested in annex 2 of the Royal Decree.

### Question 7:

My mixture, as I place it on the market; has already been subject to a previous registration (cf. Art 8 of the Royal Decree)?



If the answer to this question = **yes** , you can use the option of a limited registration for the entire mixture. You have to provide the information requested in annex 2 of the Royal Decree, but you can use the previous registration number to replace the information requested in section 2 of this annex.

If the answer to this question = **no**, go to [question 8](#)

### Question 8:

All the substances in my mixture already been subject to a previous registration, but not the mixture itself (cfr. Art 8 of the Royal Decree)?

If the answer to this question = **yes** , you can use the option of a limited registration for the substances in the mixture, but not for the mixture itself. This means you have to define the mixture, but at the level of the details of the substances, you can use the existing registration number to replace the information requested in section 2 of annex 2.

If the answer to this question = **no**, meaning you have an existing registration number for one or more substances in the mixture, but not for all the substances in the mixture, you can partly use the option of a limited registration. You have to define the mixture, and at the level of the details of the substances:

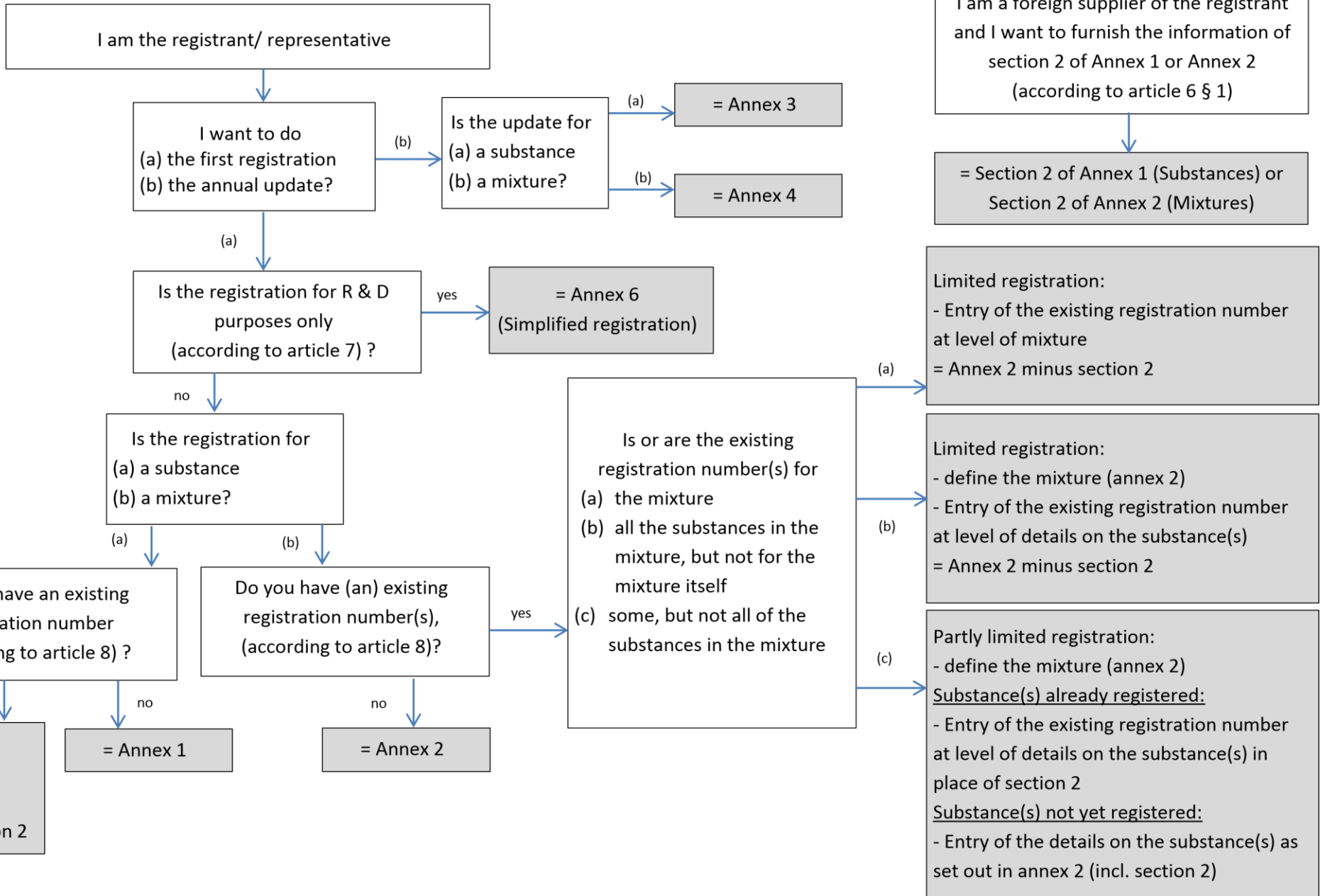
- you can use the relevant existing registration number(s) for the substance(s) already registered, to replace the information requested in section 2 of annex 2
- you have to provide the information requested in annex 2 for the substance(s) not yet registered.

*More info about the limited registration and the existing registration number?*

See FAQ 8.a, 8.1.a, 10.2.b and A.S2.a at [www.nanoregistration.be](http://www.nanoregistration.be)



## Scheme registration types





## I have to register. Where can I find more information?

On the website [www.nanoregistration.be](http://www.nanoregistration.be), you can find more guidance documents:

- Do I have to register?
- When do I have to register?
- Which type of account do I need?
- Practical manual: how to create an account
- Practical manual: how to submit a registration
- Overview (fields in software, uses, nace(bel))
- The Royal Decree
- FAQs
- The link to the registration tool

In case of questions, contact the helpdesk via [info.nanoregistration@health.fgov.be](mailto:info.nanoregistration@health.fgov.be)