



Belgian One  
Health Network

# The Belgian One Health Network (BEOH) : Who we are and what is our ambition?

Hans Keune (Belgian Biodiversity Platform, INBO, University of Antwerp),



POLICY BRIEF

## KEY BELGIAN ONE HEALTH LESSONS FROM THE COVID-19 CRISIS

THIS BRIEF

This policy brief is the result of a collaborative work carried out under the initiative of the Belgian Biodiversity Platform, Sciensano and the Federal Public Service Health, Food Chain Safety and Environment (Belgium) within the framework of the Belgian One Health Network and is supported on its principle by the Chief Veterinary Officer of Belgium and the President of the FPS Health. Its contents were compiled during the COVID-19 pandemic crisis, and started from the outcomes of the Belgian One Health (BEOH) COVID-19 survey initiated by BEOH in 2020, but were further developed within the network, incorporating follow-up discussions and practical reflections. BEOH is aware of the fact that some of the following messages are not completely novel. They have been expressed earlier by BEOH or predecessor initiatives (BEOH launch event 2019, One Health/EcoHealth workshop Brussels 2016, Biodiversity and Health conference Brussels 2011). They are shared by a diversity of actors in Belgium and internationally (e.g. the Network for EcoHealth and One Health (NEOH) – European Chapter of EcoHealth International). BEOH considers these messages are still relevant and important, perhaps even more than ever. Quite some challenges are still unanswered, and quite some challenges are on-going and demand time, and they remain an integral part of proper OH practice (such as collaboration, integration).

KEY POLICY RECOMMENDATIONS

- ◊ The importance of an Integrated One Health Approach
- ◊ The importance of inter- and transdisciplinary collaboration
- ◊ The importance of operationalisation

REPORT

# Belgian One Health Network

Launching Event

SCIENSANO, TERVUREN

5 November 2019



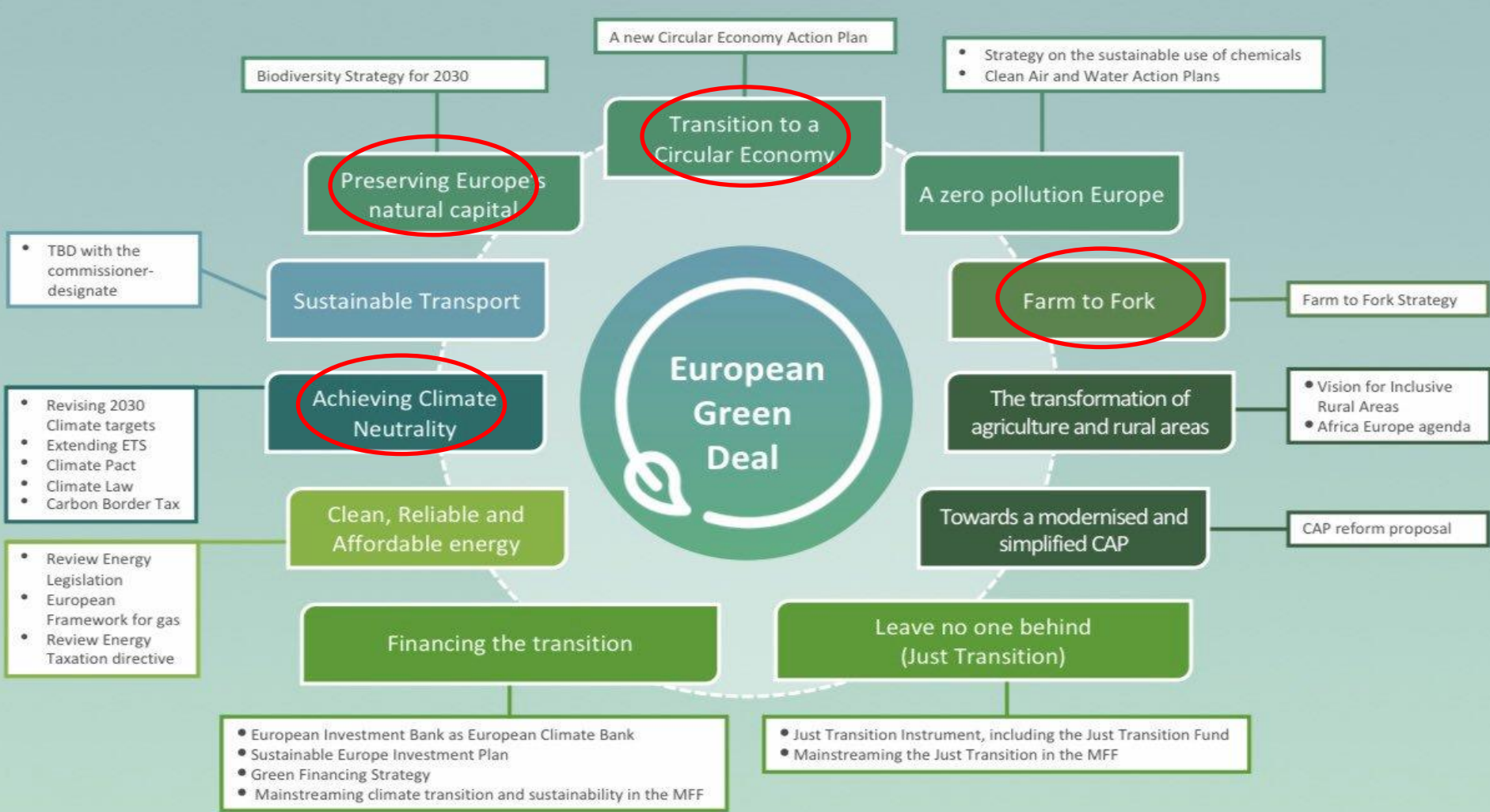
Who are you?

***GENERIC ONE HEALTH CHALLENGES	**SPECIFIC ONE HEALTH CHALLENGES		
		Integrate animal, human, plant, ecosystem health	Nature related health risks & benefits
Holistic	*Operationalize		
Collaborative			
Enabling			

**\*Operationalization of One Health.** This still is considered quite a challenge, especially when taking into account the other aspects (expectations, demands) mentioned below.

**\*\*Specific One Health challenges.** Initially mainly 1. Integration of animal, human, plant, ecosystem health was considered as core aim of One Health. There are still quite some challenges in that respect. This very much relates to 2. Integrated view on nature related health risks & benefits: traditionally One Health was mainly focussing on health risks, taking potential health benefits of nature contact far less into account. Finally 3. Integration of structural societal One Health drivers, or structural One Health, referring to socio-economic, cultural aspects, like globalization, travel and trade, the food system, health care.

**\*\*\*Generic One Health challenges** are to be considered as cross cutting themes in the specific One Health challenges.



# 09/09/2021: **Four** EU Green deal thematic prep groups

## One challenge



Belgian One  
Health Network

- **Why?**
- Bridge building facing joint sustainability challenges still quite a challenge
- Build on current interest in and energy for EU Green Deal & One Health
  - Joint input for the 20211123 BEOH conference
- **Who?**
- In each group a mixture of NGO, policy and science experts
  - Mixture of One Health & Green deal topical knowledge
- **Input & outcome:**
- Thematic fact sheets -> dialogue -> draft recommendations



## 23/11/2021: output from the thematic prep groups

1. Significance of topic in BE
2. Composition of the workshop participants
3. Highlights of intermediate steps – What do ‘others’ need to be aware of?
4. Final conclusions/thematic recommendations.



## Next steps after today's meeting

From December 2021: ***online consultation on draft recommendations***

February 2022: ***online questions & answers session*** for each thematic +  
***continued online consultation*** until mid March

April 2022: final ***BEOH – EU Green Deal recommendations report***

....2022: face to face ***BEOH networking event***