

A local single-unit transfusion policy project in the postpartum period

Dr. K. Van Pelt



ZOL

- Large non-university hospital, main campus >800 beds
- Tertiary care
 - maternal intensive care (MIC)
 - neonatal intensive care (NIC)
 - Referral centre post-partum hemorrhage



Initiation

- Dr. T. Mesens: wish to reduce number of transfusions postpartum in non-bleeding, stable patients
- Hemovigilance team offered information/evidence
 - PBM
 - Single Unit transfusion
 - Transfusion triggers



Policy prior intervention

D1 postpartum check Hb level

- Transfuse when Hb <8 g/dl
- Target Hb 10 g/dl
- No specification how many units
- No follow-up post transfusion Hb



Policy post intervention

- Hb <6 g/dl: transfuse 1U
- Hb <7 g/dl: clinical assessment: transfuse 1U when symptomatic
- Hb >7 g/dl: no transfusion, IV or PO Fe

Transfusion rules:

- Single unit
- Follow-up Hb BEFORE transfusing second unit

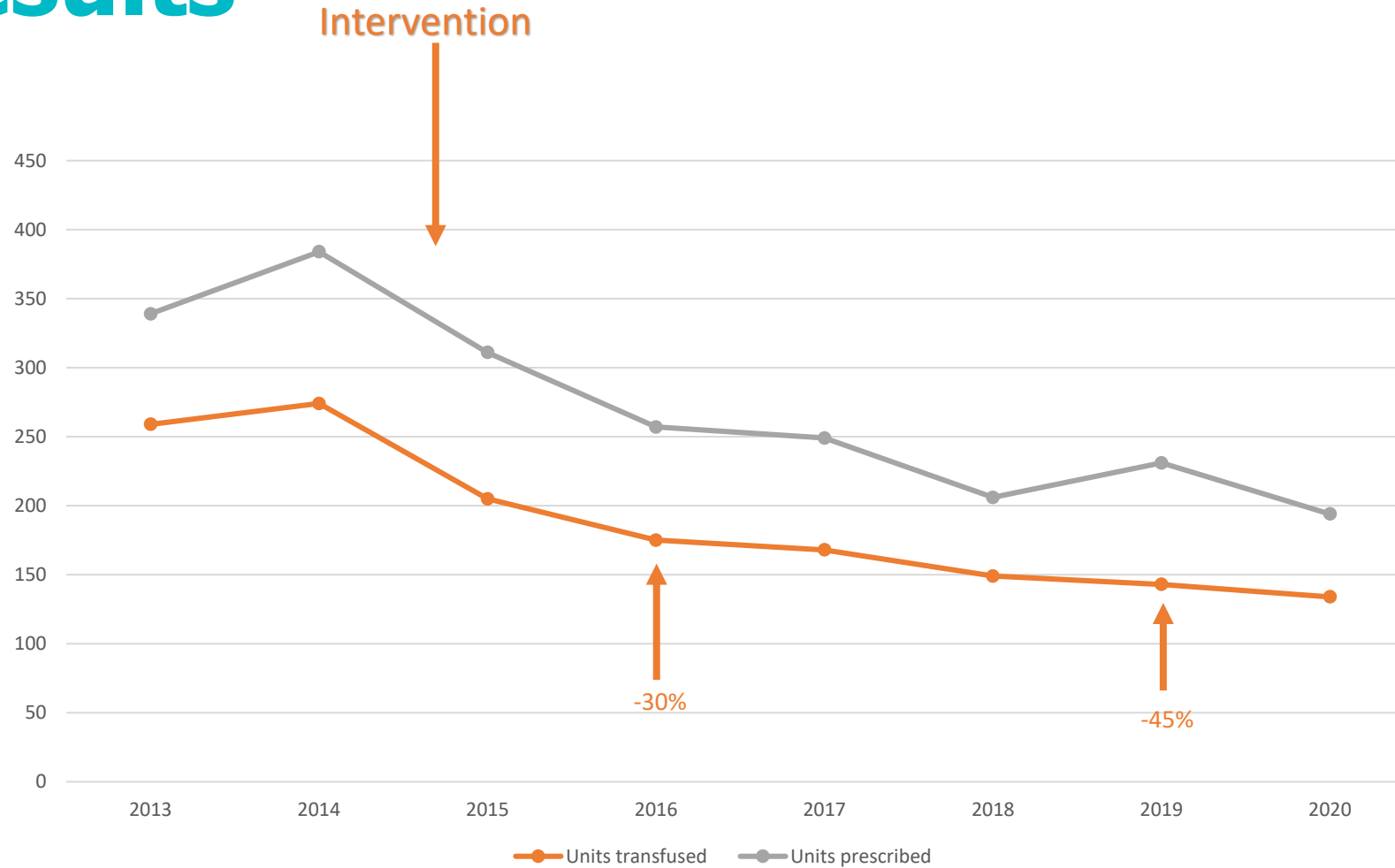


Communication new policy

- Midwife
- Physician in training/Fellow
- Attending physician



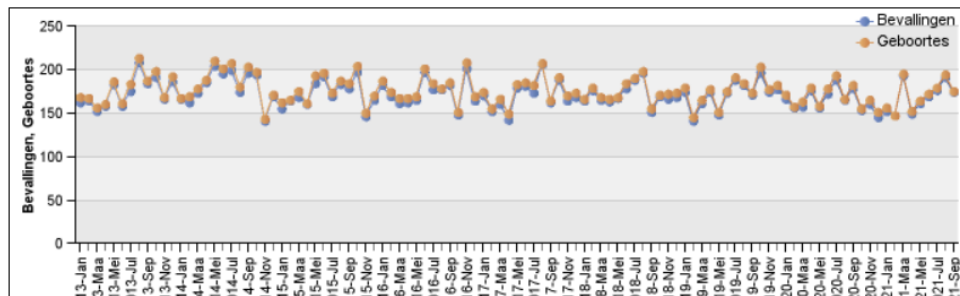
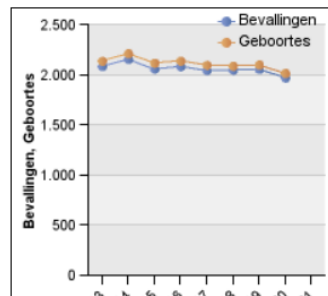
Results



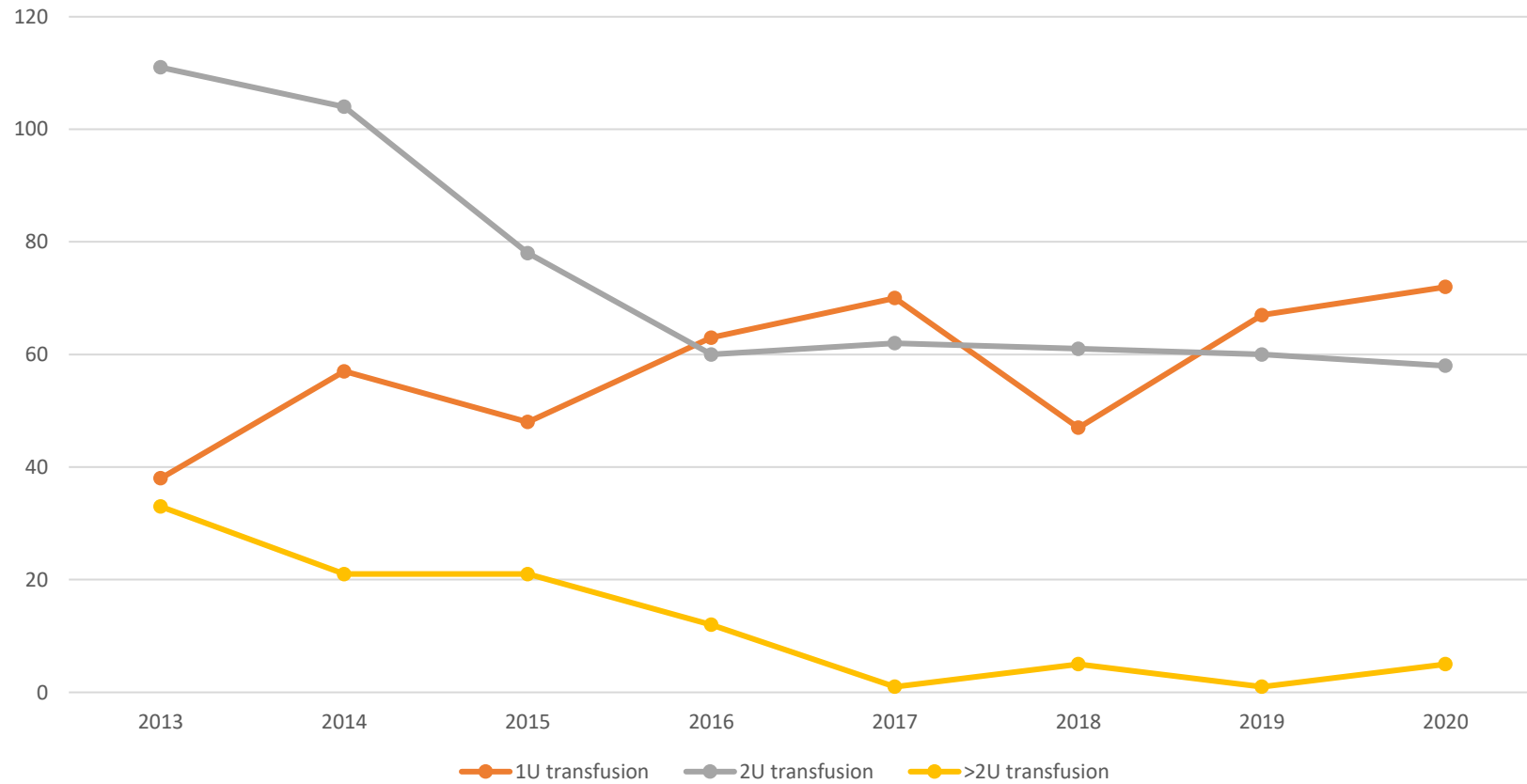
No activity change

Bevallingen	Januari	Februari	Maart	April	Mei	Juni	Juli	Augustus	September	Oktober	November	December	Totaal
2013	162	164	152	158	183	158	175	208	184	191	166	186	2.087
2014	166	162	173	185	204	195	199	174	196	194	141	169	2.158
2015	155	164	168	160	184	192	169	183	178	197	146	165	2.061
2016	182	169	161	162	165	197	177	177	182	148	201	164	2.085
2017	170	152	160	142	179	181	173	206	162	188	164	168	2.045
2018	164	176	165	163	167	178	188	196	151	169	166	168	2.051
2019	174	141	161	174	148	173	188	182	171	196	174	177	2.059
2020	166	156	157	176	156	172	188	165	178	153	160	145	1.972
2021	152	147	193	149	161	169	176	191	174				1.512

Geboortes	Januari	Februari	Maart	April	Mei	Juni	Juli	Augustus	September	Oktober	November	December	Totaal
2013	168	167	156	160	186	161	183	213	187	198	168	192	2.139
2014	167	169	178	188	210	201	207	180	203	197	143	171	2.214
2015	162	165	175	161	193	196	173	187	184	204	150	170	2.120
2016	187	174	167	167	169	201	184	178	185	151	208	169	2.140
2017	174	155	166	149	183	185	182	207	164	191	170	173	2.099
2018	166	179	168	166	168	184	190	198	155	171	172	173	2.090
2019	179	145	165	177	151	175	191	184	173	203	177	182	2.102
2020	171	157	163	179	158	178	193	166	182	155	165	151	2.018
2021	156	147	195	152	164	172	179	194	175				1.534



Second unit transfusion



Conclusion

Adopting single unit policy
Lowering transfusion trigger

resulted in

Steep decrease of prescriptions and transfusions
Increase of patients with single units transfusion



Contribution

- Dr. T. Mesens (gynaecology/obstetrics)
- A. Moors (head midwife)
- Dr. M. Beran (anesthesiology)
- H. Stremersch, S. Vanhaeren (PBM nurse)

